



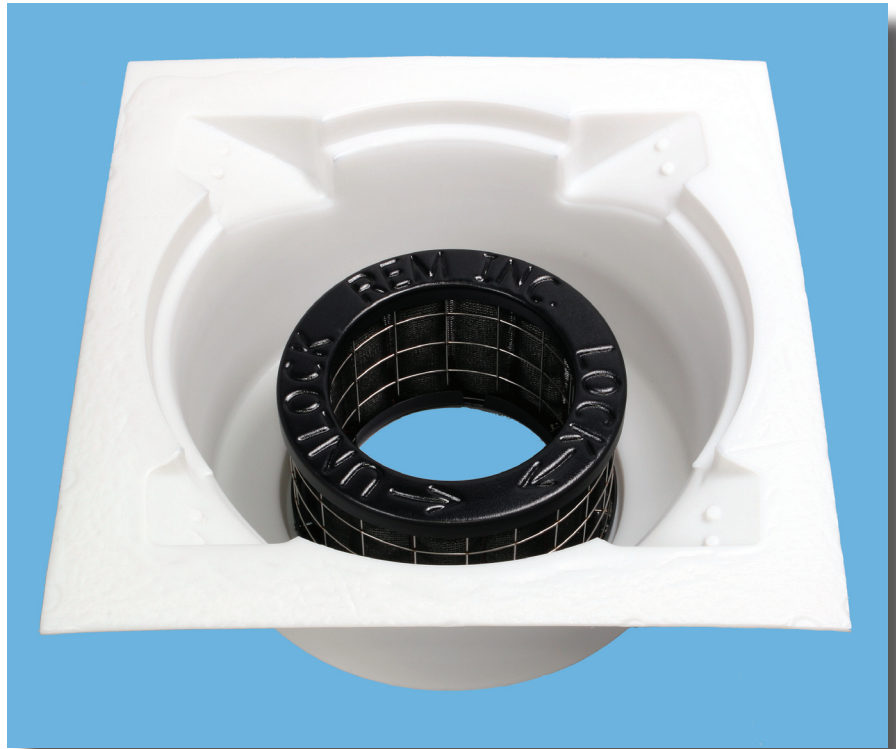
TRITON FILTER™

Product Specification

CATCH BASIN FILTER INSERT

THE TRITON FILTER

- Non-reactive High Density Polyethylene (HDPE) plastic construction, with U.V. inhibitors.
- Round, Square, Rectangular, Low Profile and Custom models.
- Dual Stage and Dual Capacity Filters are also available.
- Quick and easy servicing made available by replaceable Media-Paks.
- Filter Media-Pak available for the removal of hydrocarbons, metals, sand, silt, and litter.
- Disposable Filter Media-Pak is constructed from durable geotextile, polypropylene fabric.
- Media-Pak can be interchanged with Geo-Trap series as site conditions change.
- Media is nonhazardous, per EPA and OSHA standards.
- Patented design with high nominal flow and high overflow capacities.
- Easy to install in new and existing catch basins.
- Meets Best Available Technology (BAT) for use in Stormwater Best Management Practices (BMP).
- Maintenance contracts, including recycling of all spent absorbents are available.
- Servicing of filters on a regular basis is a requirement to meet most local and state BMP's.



MODEL TR24SR

TRITON CATCH BASIN FILTER INSERT

REM has developed the TRITON Catch Basin Insert to help eliminate hydrocarbons and other contaminants such as metals, sand, silt and litter from stormwater runoff.

The TRITON is designed to be inserted below the grate of storm drain inlets.

Patent No. 6,217,757

REM - HELPING KEEP YOUR WATERWAYS CLEAN

The most recent National Water Quality Inventory reports that runoff from urban areas is the leading source of impairments to surveyed estuaries and the third largest source of water quality impairments to surveyed lakes. In addition, population and development trends indicate that by 2010 more than half of the Nation will live in coastal towns and cities. Runoff from these rapidly growing urban areas will continue to degrade coastal waters.¹

¹Environmental Protection Agency's Office of Water EPA841-F-96-004G

Revel Environmental Manufacturing, Inc.

www.remfilters.com

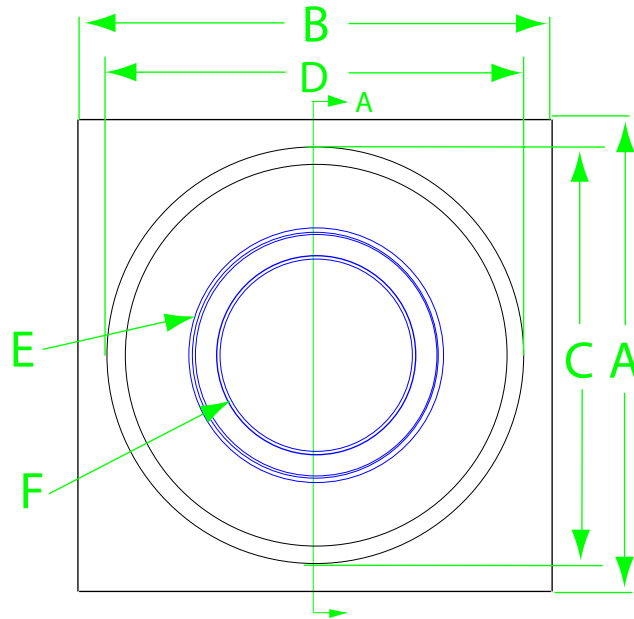
888-526-4736



TRITON FILTER™ CATCH BASIN INSERT

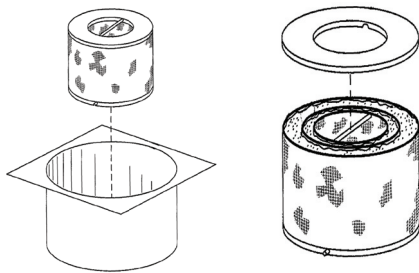


TRITON MEDIA CARTRIDGE



DIMENSIONAL SPECIFICATIONS

STANDARD DIMENSIONS (IN INCHES)



NOTES:

1. All dimensions are in inches.
2. Units are constructed from High Density Polyethylene Plastic with U.V. inhibitors.
3. Media Cartridges can be inter-changed with Geo-Trap series as site conditions change.
4. Low profile filters are also available for shallow catch basins.
5. Custom sizes are available to fit most applications. Please call a distributor near you for details.
6. Optional TDG series Trash & Debris Guard also available.
7. Dual stage and dual capacity filters also available.

	A*	B*	C	D	E	F	G*	CARTRIDGES
TR1212	13	13	11	11	6.75	3.75	5.5	1
TR1212RD	13 DIA.		11 DIA.		6.75	3.75	5.5	1
TR1616	18	18	14	14	6.75	3.75	10.5	1
TR1818	20	20	17	17	10.5	7.25	10.5	1
TR18RD	20 DIA.		16.5 DIA.		6.75	3.75	10.5	1
TR1824	19	25	17	17	10.5	7.25	10.5	1
TR2024	21	25	17	17	10.5	7.25	10.5	1
TR24SR	26	26	21	21	14	11	13	1
TR24RD	26 DIA.		21 DIA.		14	11	13	1
TR2436	26	38	17	30	10.5	7.25	10.5	2
TR3030	33	33	21	21	14	11	13	1
TR36SR	40	40	33	33	14	11	22	1 TALL
TR36RD	40 DIA.		30 DIA.		14	11	22	1 TALL
TR2448	26	52	21	42	14	11	13	2
TR4848	52	52	42	42	24	20	22	1 TALL

* Note: Dimension "G" is filter depth.
Dimensions "A" and "B" can be adjusted to suit varying sizes of catch basins.



Revel Environmental Manufacturing Inc.

sales@remfilters.com (888) 526-4736 Lic. No. 857410

Northern California
960-B Detroit Avenue
Concord, California 94518
P: (925) 676-4736
F: (925) 676-8676

Southern California
2110 South Grand Avenue
Santa Ana, California 92705
P: (714) 557-2676
F: (714) 557-2679

Distributed By:

